

DATA SHEET

ARUBA NETWORK VISUALIZER SDN APPLICATION

Provides real-time visibility and diagnosis of the network

PRODUCT OVERVIEW

Networks are growing in complexity to meet customer and user expectations for BYOD, high performance, resiliency, and flexibility. Often the methods used to investigate issues are disruptive, time-consuming, and have unintended consequences.

The Aruba Network Visualizer Software Defined Networking (SDN) Application utilizes Aruba VAN SDN Controller software to provide dynamic traffic capture with real-time, detailed network monitoring – allowing for fast network diagnosis and verification – and a rapid transition from incident to fix. The Network Visualizer integration with ClearPass identifies infected devices thus providing better security.

KEY BENEFITS

- Real-time visibility and diagnosis provides dynamic traffic capture to help determine root cause
- Low cost, simple, and automated troubleshooting assistance
- Fast transition from incident to fix, solving network issues in seconds vs. minutes
- Proactively monitor the network to reduce help desk issues
- Integration with Aruba ClearPass for enhanced security

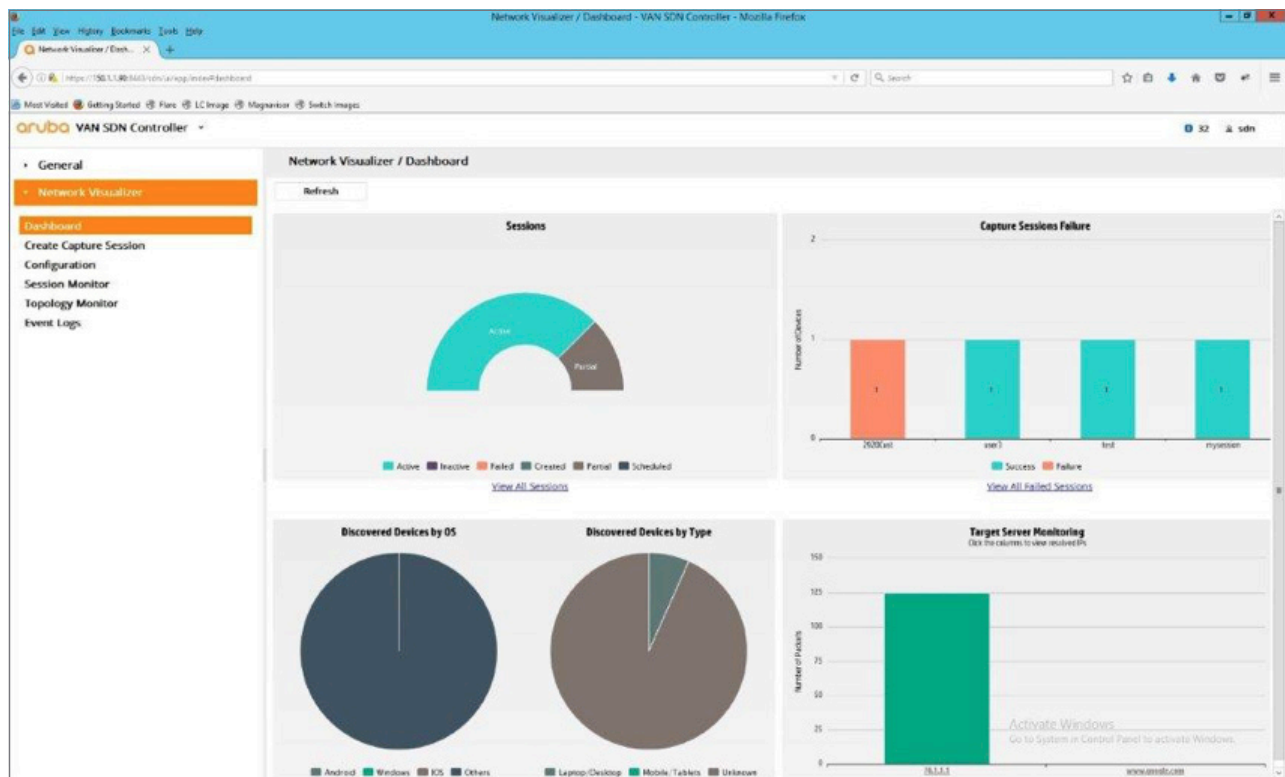


Figure 1: Network Visualizer Dashboard

FEATURES AND BENEFITS

Active Directory integration

Allows you to apply either the user ID or user group as part of the traffic selection criteria.

Custom traffic selection criteria

Gives you the ability to precisely identify the traffic to be captured.

Real-time traffic capture

Enables issue identification and investigation with live traffic.

Automated mirror session deployment

Follows the user to ensure traffic capture regardless of connection location.

Multiple traffic capture destinations

Supports remote and local capture locations.

Traffic analytics summary

Supports web view of top level analysis of captured traffic.

WARRANTY AND SUPPORT

Limited electronic and business-hours telephone support is available from Hewlett Packard Enterprise. To reach our support centers, refer to www.hpe.com/networking/contact-support. For details on the duration of support provided with your product purchase, refer to www.hpe.com/networking/warrantysummary.

SOFTWARE RELEASES

To find software for your product, refer to www.hpe.com/networking/support. For details on the software releases available with your product purchase, refer to www.hpe.com/networking/warrantysummary.

ARUBA NETWORK VISUALIZER SDN APPLICATION SPECIFICATIONS

Aruba Network Visualizer SDN Application E-LTU (JL091AAE)

Platform required	Server: Aruba VAN SDN Controller software
Minimum system requirements	Server: 3.0GHz Intel® Xeon® or Intel® Core™ 2 Quad processor or equivalent 8GB RAM memory 1000Mbps NIC
Recommended software	Server: Ubuntu 14.04 LTS 64-bit
Notes	Minimum Aruba VAN SDN Controller version <ul style="list-style-type: none"> • Aruba VAN SDN Controller 2.7 Required Aruba Switch Software • K_15_17_xxxx.swi, KA_15_17_xxxx.swi, KB_16_01_xxxx.swi, WB_15_17_xxxx.swi • Supported Aruba switch series Aruba 2920, 3800, 3810, 5400 (v2 modules), 5400R (v2 modules), 5400R (v3 modules)