



O QUE ESTÁ NA SUA REDE?

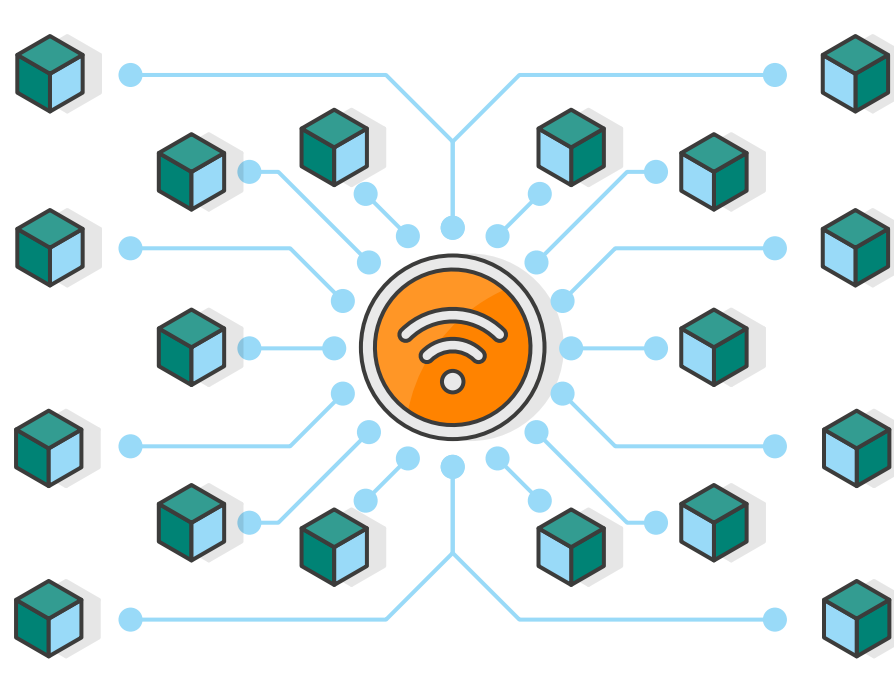
Levando em consideração a Internet das Coisas (IoT), uma força de trabalho móvel permanente e o BYOD, as organizações de hoje enfrentam uma infra-estrutura de TI cada vez mais complexa e mais exposta aos ataques cibernéticos do que nunca.

Sua empresa está pronta?

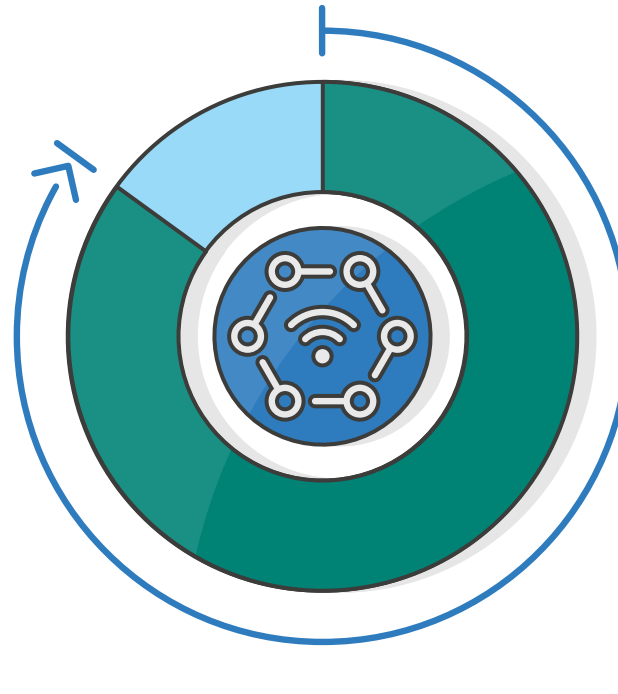
IoT: It's here... and growing!

The growth of IoT is exponential—easily overtaking your organization's ability to manage and secure it.

8.4 billion "things" are expected to connect to networks by 2017.¹



85% of businesses will implement IoT in their networks by 2019.²



But how do you secure the business and infrastructure from IoT? CIOs and CISOs are already finding out:

8 out of 10 organizations have experienced an IoT-related security breach.³



IoT security is an IT headache

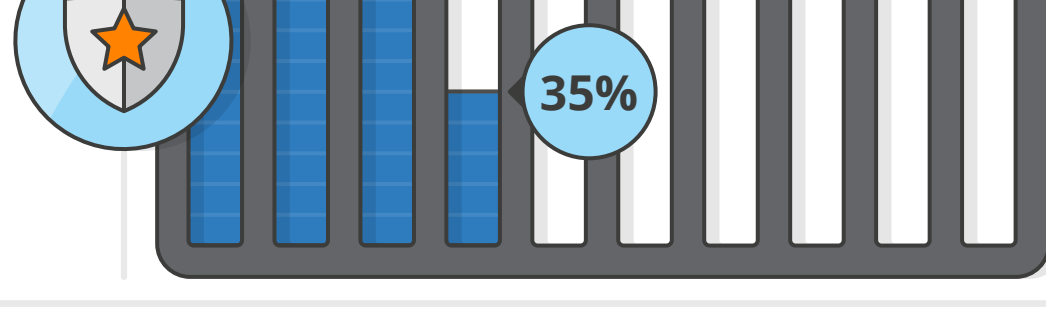
The business drives IT requirements, with more applications and devices to enable, as well as more "things" that monitor and need monitoring—each with its own app—across your entire enterprise network. The result: Security risks **increase**, while visibility and productivity **plummet**.

According to ESG research, even cybersecurity pros are feeling the strain of IoT⁴:

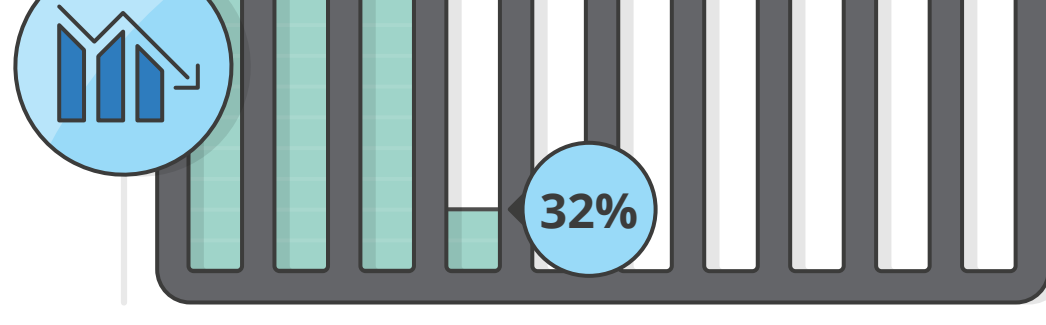
54% Most say the cybersecurity skills shortage has increased workloads, increasing analyst fatigue.



35% Over 1/3 can't utilize security technologies to their full potential, decreasing effectiveness.



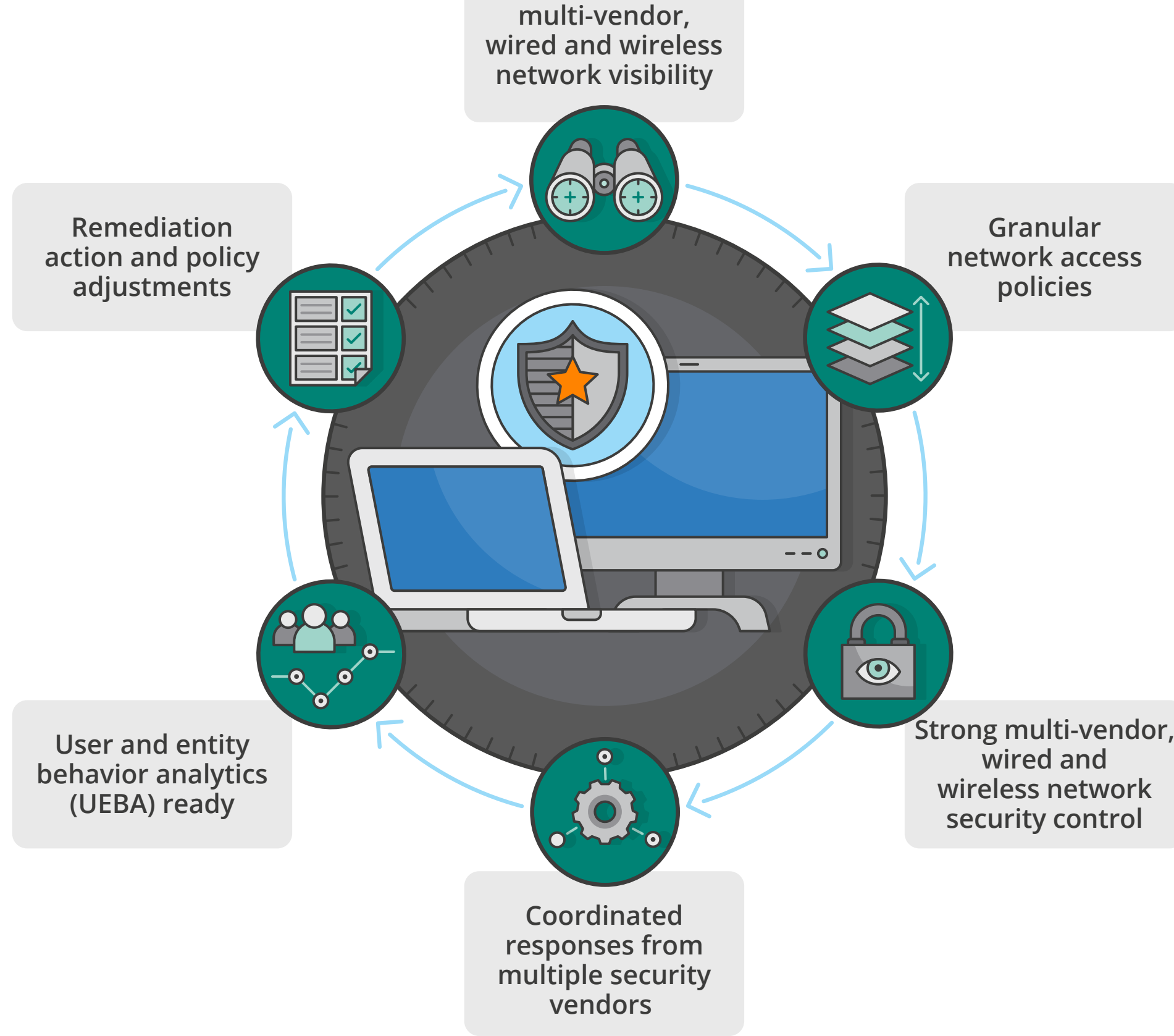
32% About the same number reported higher attrition and turnover, exacerbating the situation.



Relief for your security pains

Deploying and retaining control of IoT, as well as corporate and BYOD devices, is simple—and CISOs can work with CIOs to enable secure business. But what's the best way to proceed?

Take a "closed-loop" approach to network security with⁴:



Introducing Aruba ClearPass

Aruba ClearPass closes the loop, so only approved, authenticated, and healthy IoT, corporate and BYOD devices can connect to your network.

1

IDENTIFY
devices on your network, how many, how they've connected, and their operating systems.

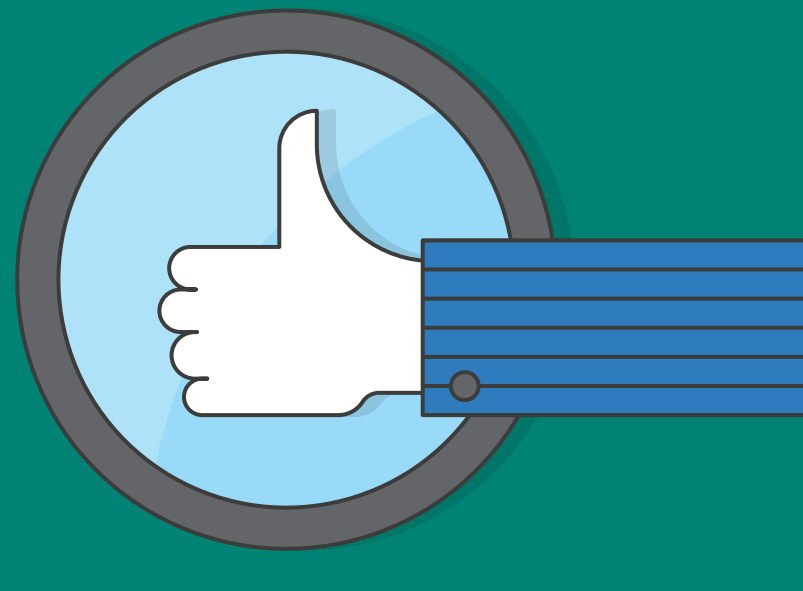
2

ENFORCE
accurate policies to provide proper user access, regardless of user, device type, or location.

3

PROTECT
resources via dynamic policy controls and real-threat remediation that extends to third-party systems.

Find peace of mind



Aruba, a Hewlett Packard Enterprise company, is a leading provider of next-generation networking solutions.

Keep your network safe and generate value, so you can focus on threat prevention, detection, and response with Aruba ClearPass.

How secure is your enterprise network?

Find out now with our Enterprise Security Assessment.

ASSESS YOUR RISK →