

HPE Aruba Networking AP-ANT-328 antenna for indoor access points



Dual-polarized cabled tri-band 2-element high gain directional panel antenna (RP-SMA) for indoor and outdoor use

The AP-ANT-328 antenna is a tri-band, 2-element, dual-polarized panel antenna with nominal 60° H x 60° V beamwidths and 8dBi peak gain. This antenna is well suited for indoor and outdoor directional coverage for Wi-Fi access in 2.4GHz, 5GHz and/or 6GHz concurrently.

The AP-ANT-328 can be mounted directly to a wall (or ceiling) using the supplied screws and anchors, or if more flexibility is needed it can be combined with the optional AP-ANT-MNT-U articulating wall/pole mount.

Specifications

Frequency bands, ranges, and peak gains

| | | |
|--------|-------------------|------------------------------|
| 2.4GHz | 2.400GHz-2.500GHz | 7.5dBi |
| 5GHz | 5.000GHz-5.875GHz | 8.0dBi |
| 6GHz | 5.935GHz-7.150GHz | 8.0dBi (6.7dBi above 7.0GHz) |

Polarization

Dual slant, ±45°

Pattern beamwidth (3dB)

| | |
|--------|--|
| 2.4GHz | Elevation (V): 70 degrees Azimuth (H): 70 degrees |
| 5GHz | Elevation (V): 56 degrees Azimuth (H): 56 degrees |
| 6GHz | Elevation (V): 56 degrees Azimuth (H): 56 degrees |

Input impedance

50 Ohms

Maximum input power

6 Watts

VSWR

< 2.0:1

Port isolation

| | |
|--------|------|
| 2.4GHz | 20dB |
| 5GHz | 20dB |
| 6GHz | 20dB |

Dimensions

190mm x 190mm x 40mm (antenna itself)
 • An additional 11mm each side is required for antenna wall installation
 263mm x 245mm x 78mm (as it ships)

Weight

1kg (antenna itself)
 TBD (as it ships)

Radome

Material: Polycarbonate
 Color: Grey-white (RAL-9002)

Fly cable length& type/connector

2x 750mm RF coaxial cable with RP-SMA male connector

Operating temperature range and relative humidity

-40°C to +85°C (temp)
 5% to 95% RH (humidity)

Water and dust protection (IP rating)

IP67

Wind speed

220km/h (survival) 160km/h (operation)

Lightning protection

DC grounded

Installation hardware

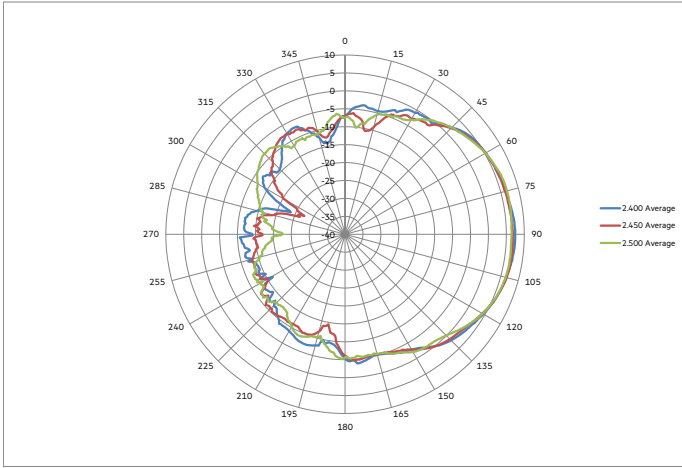
Ships with wall anchors
 Optional AP-ANT-MNT-U adjustable wall/role mount bracket purchased separately.

Shipping content

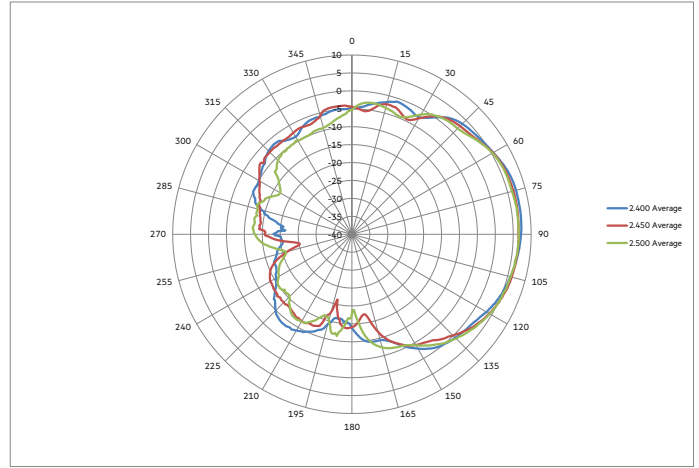
This antenna ships in a cardboard box
 An installation guide hardcopy is included in the box

Antenna patterns (averaged for both antenna elements)

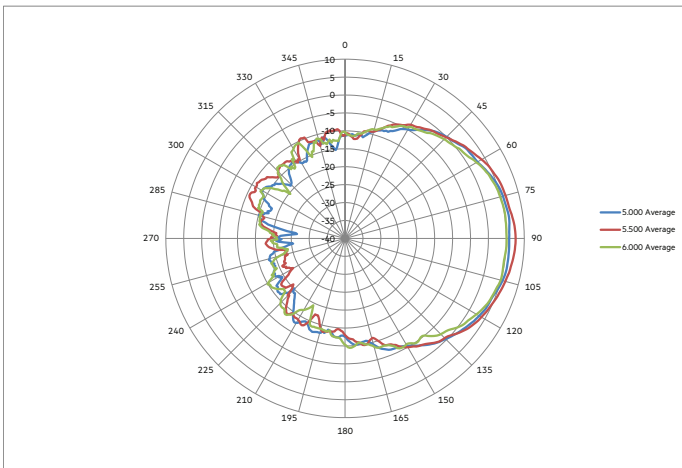
Horizontal (azimuth) plane (top view) & Vertical (elevation) plane (side view)



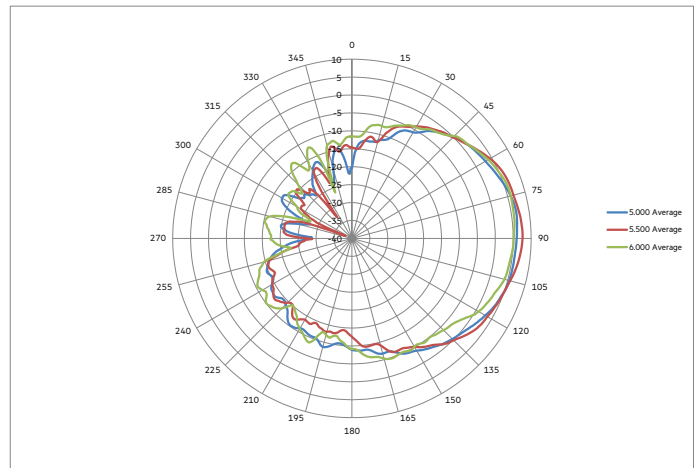
2.4GHz antenna patterns (horizontal)



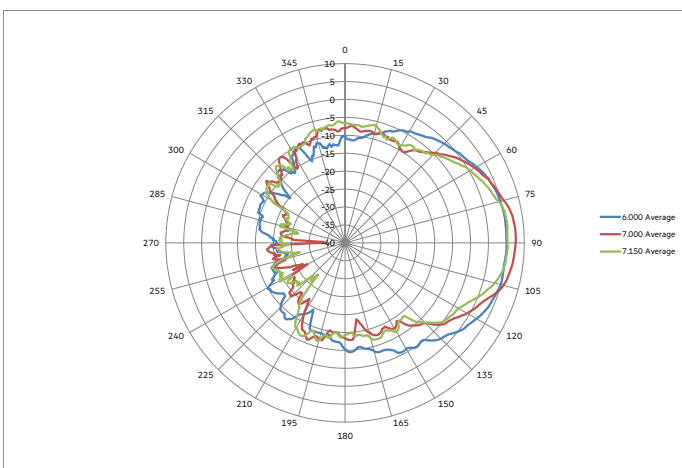
2.4GHz antenna patterns (vertical)



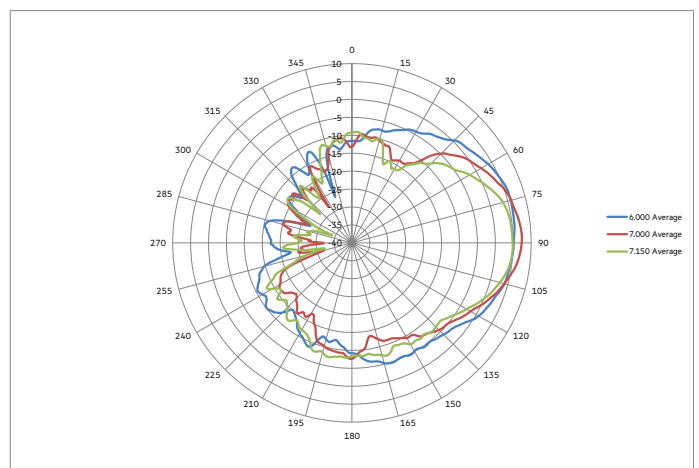
5GHz antenna patterns (horizontal)



5GHz antenna patterns (vertical)



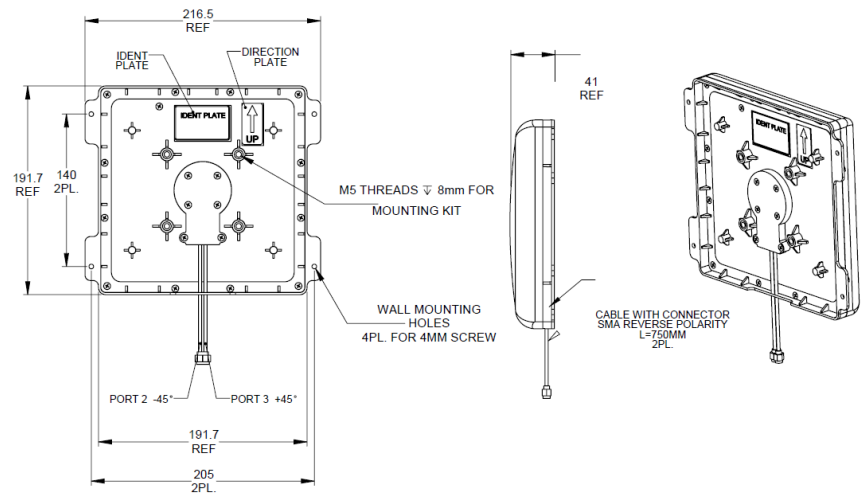
6GHz antenna patterns (horizontal)



6GHz antenna patterns (vertical)



Mechanical drawings



Ordering information

| Part number | Description |
|--|--|
| HPE Aruba Networking Antennas for Indoor Access Points (RP-SMA) | |
| S1F83A | HPE Aruba Networking AP-ANT-328 Cabled RP-SMA Tri-Band 2x2 High Gain Directional Panel Antenna |

Make the right purchase decision.
Contact our presales specialists.

