

## DATA SHEET

# ARUBA CENTRAL FOR GOVERNMENT

AI-powered single point of visibility and control

Aruba Central for Government is a versatile, cloud-native network solution that offers unmatched simplicity, security, and scale that is needed for today's network operations. As the single point of visibility and control for [Aruba ESP \(Edge Services Platform\)](#), Aruba Central oversees every aspect of Wi-Fi, wired switching, and VPNs across campus, branch, remote, and data center locations.

AI-powered analytics, end-to-end orchestration, and advanced security features are built natively into the solution. Flexible software upgrades, robust reporting, and integrated support are also included, bringing more efficiency to day-to-day maintenance activities.

Built on a cloud-native, microservices architecture, Aruba Central delivers on enterprise requirements for scale and resiliency, along with intuitive workflows and dashboards that make it a perfect fit for enterprises and business of all sizes.

## STREAMLINED NETWORK OPERATIONS

Aruba Central eliminates the inefficiency of using disjointed, domain-specific network management tools. It begins with a network health summary dashboard that provides quick insights to analyze and improve the network—whether it be the wired or wireless LAN, or performance across the WAN.

From this single dashboard, IT operators can readily assess the state of the network with views into global and site-level details. Selecting a site changes the interface to only show network devices and connected clients specific to that location. This way, IT operators can swiftly identify potential problems, as well as zero-in on specific locations that require their immediate attention.

## FEDRAMP AUTHORIZED

Aruba Central is the first cloud-native network management system to achieve an "Authorized" designation with the Federal Risk and Authorization Management Program (FedRAMP) - critical for U.S. government agencies undergoing cloud transformation. As a government-wide program, FedRAMP promotes secure adoption by providing a set of security and risk assessment standards

## KEY FEATURES

- Unified management of wireless, wired, and VPN for simplified operations
- Only cloud-native network management system to achieve FedRAMP Authorization, improving confidence in cloud security and accelerating cloud adoption
- Rapid on-boarding and streamlined device provisioning with an easy setup wizard, flexible configuration options, and zero touch provisioning
- AI-based insights for faster troubleshooting and continuous network optimization
- Powerful monitoring and troubleshooting for remote or home office networks
- Intuitive, customizable reporting features for improved capacity planning and baselining
- AI-based search engine for an enhanced support experience

that cloud technologies must adhere to. Accreditations such as FedRAMP provide even stronger assurance that all companies or entities – including U.S. federal agencies and participating state and local (SLED) government IT departments – can confidently adopt Aruba Central's cloud-based services to simplify operations, reduce IT costs, and create greater value for their organizations.

For further details on how Aruba Central can meet your organization's security and data privacy requirements, please refer to the [technical brief](#).

This data sheet summarizes the functions and benefits of Aruba Central for US Federal audiences. With Aruba Central, Federal organizations can take advantage of a powerful combination of network management, with unified infrastructure, AIOps and edge-to-cloud security, combined with certified cloud security.



## SIMPLIFIED ONBOARDING AND PROVISIONING

Onboarding, configuring, and provisioning network devices is a key activity in any environment, but can be time-consuming and complex. Aruba Central accelerates this process with an easy setup wizard, flexible configuration options, and zero touch provisioning, further aided by an intuitive mobile installer app.

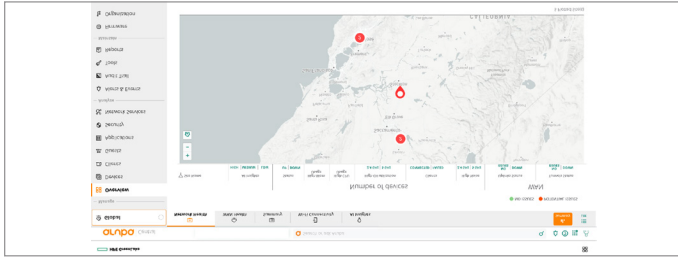


Figure 1: Network Health Summary

### Guided Setup Wizard

The setup wizard automatically adds account subscriptions, synchronizes device inventory from orders, and assigns purchased licenses to devices. This saves time, improves accuracy, and makes it easier to onboard or replace devices into your environment.

### Flexible Configuration Options

To simplify device configurations, Aruba Central uses templates and a UI option that features guided, step-by-step workflows. For devices with common configuration requirements, network admins can use groups to instantly apply or modify settings across large sets of devices.

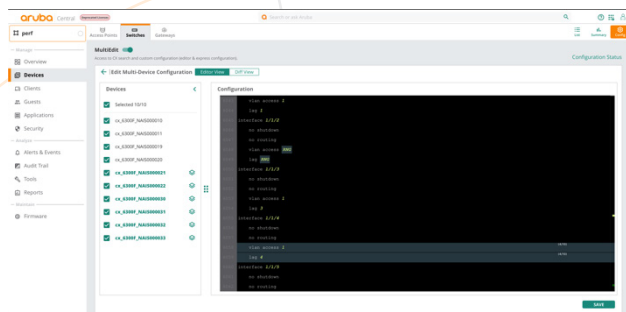


Figure 2: Multi-editor for configuring Aruba CX switches at scale

Additional options are available for Aruba CX switches, including pre-built express configs that enable network-wide changes with only a few prompt-driven inputs. A multi-editor is also available for more advanced configurations. Both options offer built-in device validation, giving network admins the ability to rapidly stage, test, and roll-out changes while ensuring common criteria and existing policies are met.

### Zero Touch Provisioning

Zero touch provisioning provides a simple, intuitive workflow for setting up APs, switches, and gateways – no onsite IT involvement required. Configuration parameters can be defined within Aruba Central based on network- or sites-specific requirements. To get started, simply plug in and power on a device. As the device boots up, it connects to Aruba Central and automatically receives its running configuration from the cloud.

### Mobile Installer App

The mobile installer app allows you to delegate the installation and deployment of devices to trusted resources or third-party service providers. The app lets you define the access privileges of each IT resource and track the onboarding process as devices are scanned and added to the assigned network. The zero touch provisioning process is then used, and the status of each device is instantly updated in the Aruba Central installer dashboard.

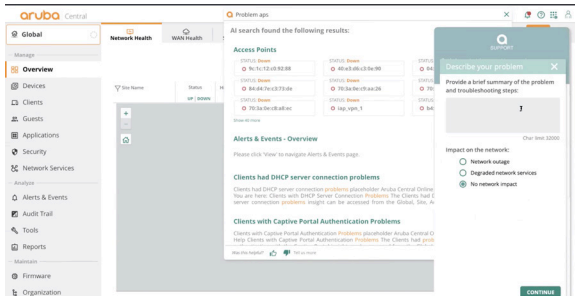


Figure 3: AI Search with integrated live chat support

## AI-POWERED MONITORING AND TROUBLESHOOTING

When a network- or business-impacting problem occurs, quick detection, root cause identification, and resolution are at the core of maintaining a stable environment. Aruba Central enables 24x7, intelligent monitoring of networks, applications, client devices, and end-user experience, all correlated into powerful visualizations and dashboards.

### AIOps for Wireless, Wired, and WAN

Built on a privacy-compliant data lake, Aruba Central collects and analyzes telemetry data from your network and keeps you informed about what's impacting your network, and what can be optimized to proactively improve network performance, security, and user experience.

- **AI Insights:** Automatically surface and diagnose an array of common network-impacting issues by using dynamic, per-site baselines that are continuously tuned as conditions change – no manual setup or adjustment of service level thresholds required. Built-in anomaly detection highlights the severity and impact of issues as they occur, helping IT pinpoint root cause and proper remediation steps with 95% accuracy.
- **AI Search:** A natural language processing (NLP) engine of the Aruba Central data lake that points to solution guides, troubleshooting tips, and more. Whether operators are looking for best practices on device configurations or need to isolate a problem impacting a specific user, AI Search provides fast, interactive responses that simplify Day 0 to Day 2 operations.

## Additional Monitoring Capabilities

Detailed health and analytics dashboards are also available to monitor:

- **Network health and assurance:** Gain broad visibility into network-wide performance, and drill-in to specific sites with summaries of device utilization, configuration compliance, and other statistics.
- **Application visibility:** Monitor application health across the network, ensuring critical services receive priority traffic while tracking and enforcing acceptable usage by site, device, or location.
- **Client health:** Delivers a multitude of details on devices connected to the network, including insights into client performance, connectivity status, physical location, and the data path.
- **AI-based connectivity insights:** Automatically identify potential Wi-Fi connectivity issues tied to DHCP, DNS, authentication failures, and more.

For wired networks, IT operators gain visibility into the health and utilization of both individual and stacked switches. This includes port status, PoE consumption, VLAN assignments, device and neighbor connections, power status, and more—with built-in alerts and events that accelerate wired network troubleshooting.

### Built-in Troubleshooting Tools

Troubleshooting capabilities include live events, packet capture, logs, and rich command line tools. Diagnostic checks such as ping tests and traceroutes are also available, as are device-level performance tests for Aruba infrastructure.

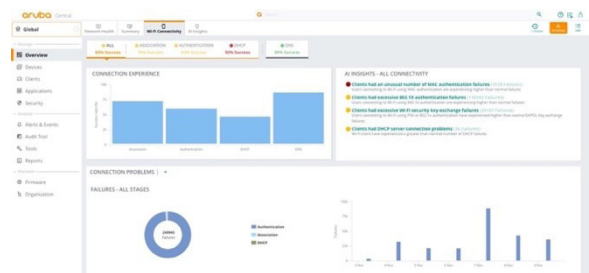


Figure 4: AI-based Wi-Fi connectivity insights



## PATENTED WIRELESS OPTIMIZATION TECHNIQUES

Cloud, IoT, and newer applications such as 8K video streaming and AR/VR are flooding Wi-Fi networks. Combined with poor building conditions that can interfere with client connectivity, these bandwidth-intensive applications can have a crippling effect on network performance and end-user experience.

Aruba Central orchestrates a number of unique AI-powered capabilities that keep Wi-Fi networks performing at peak levels.

### SLA-Grade Application Assurance with Air Slice

Guarantee performance and optimize user experience with [Air Slice](#). By dynamically allocating radio resources such as time, frequency, and spatial streams, Air Slice helps guarantee performance for latency-sensitive, high-bandwidth applications such as AR/VR, Zoom, and Slack as well as IoT devices.

### Optimize Client Connectivity

Enhance traditional radio and roaming techniques with ClientMatch, a patented RF optimization technology that continually enhances connectivity for Wi-Fi 6 and Wi-Fi 5 clients and eliminates sticky client issues.

### Eliminate Indoor Coverage Gaps

Enable seamless handoffs between cellular and Wi-Fi with Air Pass\*. Using pre-negotiated agreements with major mobile network operators and the Wi-Fi certified Passpoint® standard, Air Pass eliminates the need for captive portals, usernames, and passwords to deliver a great experience for your guests while reducing costs and management overhead of DAS.

## AUTOMATE SECURITY AT SCALE FROM EDGE TO CLOUD

Hybrid workplace initiatives, IoT, and edge computing are increasing network complexity. Meanwhile, new security exploits crop up every day. As a result, manual configuration of static VLANs, ACLs, and subnets at every network hop is no longer practical or scalable for protecting today's distributed enterprise.

To help tighten network security and simplify IT operations, Aruba Central provides a built-in foundation for Zero Trust. IT has the visibility, control, and enforcement to address the requirements of a decentralized network infrastructure.

## Secure Wireless Segmentation

For venues such as malls or airports that require multi-tenancy operations, MultiZone enables secure SSID separation without needing to deploy additional access points. A key use case of MultiZone is keeping IoT devices – which aren't very secure – separate from other enterprise traffic without incurring the expense or complexity of deploying and managing another wireless network.

### Intrusion Detection

Aruba Central utilizes Aruba's Rogue AP Intrusion Detection Service (RAPIDS) to identify and resolve issues caused by rogue APs and clients. Wired and wireless data is automatically correlated to identify potential threats, strengthening network security and improving incident response processes by reducing false positives.

### Web Content Filtering

Web Content Classification (WebCC) classifies websites by content category and rates them by reputation and risk score, enabling IT to block malicious sites to help prevent phishing, DDoS, botnets, and other common attacks.

## ROBUST REPORTING

Aruba Central provides premium-grade reporting features that are included as part of the base license subscriptions. Reports cover device connectivity, network health, capacity planning, and the ability to baseline and compare user experience across various sites in the network. A reporting wizard is also provided to generate scheduled and on-demand reports that highlight network and application health, throughput and usage data, device and client inventory, activity auditing, and much more.

## SIMPLE, FLEXIBLE CONSUMPTION

Software subscriptions – formally referred to as licenses – enable various management features within Aruba Central, and are purchased on a per-device basis. Subscriptions are available in 1-, 3-, 5-, 7-, and 10-year increments, making it easy for customers to align requirements for AIOps, security, and other desired management features with both current and future budgets.



### Foundation Subscriptions

Foundation subscriptions enable all primary enterprise features for campus, branch, remote, and data center networks, and provide access to monitoring, reporting and troubleshooting, onboarding, provisioning, orchestration, AI and analytics, and 24x7 TAC (including software support for all hardware).

### Advanced Subscriptions

Advanced subscriptions are available for Aruba access points and gateways and include all Foundation features while adding enhanced AIOps, security, and other premium features, such as end-to-end segmentation, expanded AI Insights, and reporting, and more.

### ARUBA CENTRAL HELP CENTER

Aruba Central provides context-based assistance when and where you need it the most. The NLP engine of AI Search dynamically adjusts query results based on your location within the Aruba Central user interface, placing helpful solution guides directly at an IT admin's fingertips.

For information on features, configurations, and newly supported APs, switches, and gateways, please visit the [Aruba Central Help Center](#).

### AIRHEADS COMMUNITY

Aruba's Airheads Community is a great place to connect, innovate, and share with some of the sharpest enthusiasts in the networking industry. You'll get access to discussion forums, expert articles, and cutting-edge content. Learn more at [arubanetworks.com/airheads-community/](https://arubanetworks.com/airheads-community/)

### CUSTOMER FIRST, CUSTOMER LAST SUPPORT

Aruba products that are assigned an Aruba Central subscription are fully supported and include:

- 24x7 priority technical support for troubleshooting.
- Software updates and upgrades for Aruba Central and all Aruba hardware products managed by Aruba Central.
- Options to upgrade parts replacement for all hardware managed by Aruba Central with a [Foundation Care for Aruba](#) contract for either next business day exchange or 4-hour onsite repair and replacement.

In addition to hardware replacement options, you can also optionally add [Aruba Pro Care](#) for fast access to senior Aruba TAC Engineers, who are assigned as a single point of contact for case management, reducing the time spent addressing and resolving issues.

For complete details on Foundation Care and Aruba Pro Care, please visit: <https://www.arubanetworks.com/support-services/>

### DESIGN, DEPLOYMENT, MIGRATION, AND MANAGEMENT SERVICES

Aruba Professional Services can help you rapidly deploy Aruba Central and other components of Aruba ESP with [QuickStart Services](#) that provide expert audit, design, and deployment or migration assistance following Aruba best practices. Aruba AirWave customers migrating to Aruba Central can take advantage of our pre-defined migration service. Contact your Aruba sales representative for more information.

You can also optimize your deployments across the technology lifecycle to maximize value with Proactive Engineering Services, providing technology management and easy renewal or expansion services. [Learn more here](#).



Table 1: Aruba Central Deployment Model Comparison

	Cloud (SaaS)
<b>Software</b>	
License Model	Per device (AP, switch)
License Duration	Fixed Term (1-, 3-, 5-, 7-, 10-year)
Software Support	✓
<b>Network Devices</b>	
Scale	N/A
Supported Devices	Aruba IAPs, Switches
Compatible OS	InstantOS 8.x, AOS 8.x, AOS-S, AOS-CX
Hardware Support	Optional
<b>Select Features</b>	
AI Insights*	Wi-Fi, Wired
AI Search	✓
AI Assist/Live Chat	✓
Contact Tracing	✓
<b>Miscellaneous</b>	
Professional Services	Optional
Managed Service Provider Mode	Optional

\* Certain AI Insights including baseline computations are excluded in adherence to FedRAMP guidelines.

## ORDERING INFORMATION

Part Number	Description
R8K84AAE	Aruba Central AP Advanced 1yr Subscription Government E-STU
R8K85AAE	Aruba Central AP Advanced 3yr Subscription Government E-STU
R8K86AAE	Aruba Central AP Advanced 5yr Subscription Government E-STU
R8K87AAE	Aruba Central AP Advanced 7yr Subscription Government E-STU
R8K88AAE	Aruba Central AP Advanced 10yr Subscription Government E-STU
R8K89AAE	Aruba Central 25xx/6100 Switch Foundation 1yr Subscription Government E-STU
R8K90AAE	Aruba Central 25xx/6100 Switch Foundation 3yr Subscription Government E-STU
R8K91AAE	Aruba Central 25xx/6100 Switch Foundation 5yr Subscription Government E-STU
R8K92AAE	Aruba Central 25xx/6100 Switch Foundation 7yr Subscription Government E-STU
R8K93AAE	Aruba Central 25xx/6100 Switch Foundation 10yr Subscription Government E-STU
R8K94AAE	Aruba Central 62xx or 29xx Switch Foundation 1 year Subscription Government E-STU
R8K95AAE	Aruba Central 62xx or 29xx Switch Foundation 3yr Subscription Government E-STU
R8K96AAE	Aruba Central 62xx or 29xx Switch Foundation 5 year Subscription Government E-STU



**ORDERING INFORMATION (CONTINUED)**

Part Number	Description
R8K97AAE	Aruba Central 62xx or 29xx Switch Foundation 7yr Subscriptions Government E-STU
R8K98AAE	Aruba Central 62xx or 29xx Switch Foundation 10yr Subscription Government E-STU
R8K99AAE	Aruba Central 63xx/38xx Switch Foundation 1yr Subscription Government E-STU
R8L00AAE	Aruba Central 63xx/38xx Switch Foundation 3yr Subscription Government E-STU
R8L01AAE	Aruba Central 63xx/38xx Switch Foundation 5yr Subscription Government E-STU
R8L02AAE	Aruba Central 63xx/38xx Switch Foundation 7 year Subscription Government E-STU
R8L03AAE	Aruba Central 63xx/38xx Switch Foundation 10 year Subscription Government E-STU
R8L04AAE	Aruba Central 84xx/83xx/64xx/54xx Switch Foundation 1 year Subscription Government E-STU
R8L05AAE	Aruba Central 84xx/83xx/64xx/54xx Switch Foundation 3 year Subscription Government E-STU
R8L06AAE	Aruba Central 84xx/83xx/64xx/54xx Switch Foundation 5 year Subscription Government E-STU
R8L07AAE	Aruba Central 84xx/83xx/64xx/54xx Switch Foundation 7 year Subscription Government E-STU
R8L08AAE	Aruba Central 84xx/83xx/64xx/54xx Switch Foundation 10 year Subscription Government E-STU
R8L09AAE	Aruba Central EVAL 90 day Subscription Government E-STU



© Copyright 2022 Hewlett Packard Enterprise Development LP. The information contained herein is subject to change without notice. The only warranties for Hewlett Packard Enterprise products and services are set forth in the express warranty statements accompanying such products and services. Nothing herein should be construed as constituting an additional warranty. Hewlett Packard Enterprise shall not be liable for technical or editorial errors or omissions contained herein.

DS\_ArubaCentralForGovernment\_RVK\_071422 a00125617enw

Contact us at [www.arubanetworks.com/contact](http://www.arubanetworks.com/contact)