

DATA SHEET

ENTERPRISE

ARUBA ORCHESTRATOR GLOBAL ENTERPRISE

Aruba Orchestrator Global Enterprise is a secure, cloud-hosted SaaS application that enables enterprises to centrally manage and monitor multiple Aruba EdgeConnect SD-WAN fabrics.

KEY BENEFITS:

- Accelerate business agility with isolated, individually managed SD-WANs
- Lower the cost of new deployments with Orchestration-as-a-Service
- Reduce IT administration cost and overhead with the global orchestration of SD-WANs
- Accelerate secure SD-WAN infrastructure growth with a cloud-scale architecture
- Increase IT productivity and customer satisfaction with centralized visibility and management of SD-WANs

Aruba Orchestrator Global Enterprise provides centralized management and an aggregated view of multiple independent Aruba EdgeConnect SD-WAN fabrics. An intuitive graphical user interface (GUI) provides unprecedented levels of aggregated visibility, control and management across large enterprises with thousands of sites, operating multiple SD-WAN fabrics. Each SD-WAN fabric is a deployment of the Aruba EdgeConnect SD-WAN edge platform, managed by a secure, dedicated Aruba Orchestrator instance — or tenant Aruba Orchestrator.

Large global enterprises with multiple business units (BU) or subsidiaries are able to span multiple regions (administrative domains) where there is a requirement to support different regional QoS or security policies. Each individual SD-WAN fabric can be centrally configured and managed in alignment with business requirements, while also enabling each fabric to be managed independently via its own Aruba Orchestrator instance.



Additionally, managed service providers (MSPs) benefit when managing multiple enterprise-owned SD-WAN deployments by having a single console from which to access all underlying Aruba Orchestrator tenant instances.

KEY CAPABILITIES

- **Single sign-on view to multiple SD-WAN fabrics:** Enables the global management of networks that span different administrative domains, including a single-click log-in into each individual Aruba Orchestrator tenant
- **Secure Orchestration-as-a-Service:** Leverages segregated customer databases, high-level resiliency with automated recovery from host or zone failures, multi-factor authentication and role-based user access, all in a secure cloud-hosted environment
- **Centralized alarm view across multiple SD-WANs:** Enables alarm monitoring with an aggregated view of alarms for all SD-WAN fabrics; a single-click provides alarm details for a specific tenant SD-WAN fabric by automatically logging into its tenant Aruba Orchestrator instance
- **Individual Aruba EdgeConnect SD-WAN software versioning, maintenance and upgradeability:** Allows the enterprise or MSP to operate and manage multiple SD-WAN fabrics each running unique software releases aligned to the requirements of an individual business unit, subsidiary, region or tenant customer
- **Granular role-based access control (RBAC) for administrators and end customers:** Grants singular privilege levels for different authorized users to each SD-WAN fabric — read only or read/write permissions



Aruba Orchestrator Global Enterprise

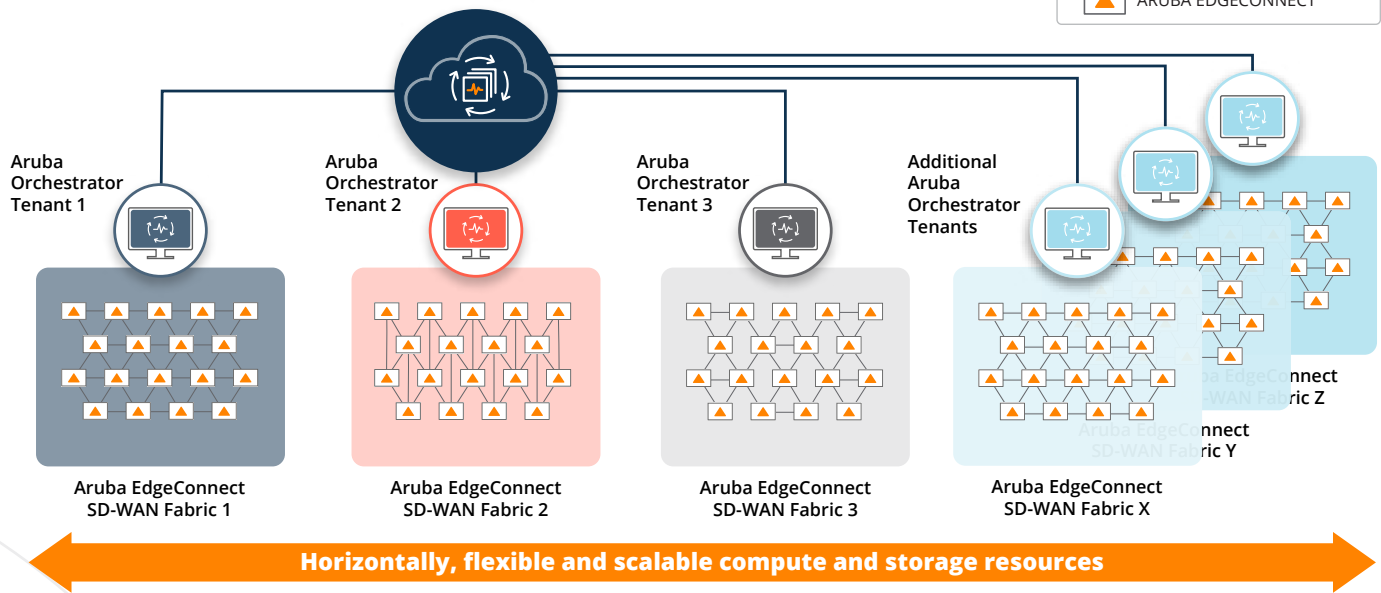
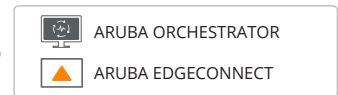


Figure 1: Aruba Orchestrator Global Enterprise enables large enterprises to globally manage and monitor multiple SD-WAN fabrics supported by independent tenant Aruba Orchestrator instances to support the requirements of different business units or subsidiary companies

GLOBAL MANAGEABILITY OF LARGE-SCALE SD-WAN DEPLOYMENTS

Aruba Orchestrator Global Enterprise provides single-pane-of-glass management for multiple SD-WAN fabrics. It simplifies lifecycle operations such as software upgrades, maintenance and automates configuration back-up and restoration. For MSPs managing enterprise-owned SD-WAN deployments, Aruba Orchestrator Global Enterprise ensures flexibility in tailoring deployments to individual customer requirements. It securely isolates each tenant SD-WAN configuration, alerts, alarms and statistics data to assure robust security.

New Aruba Orchestrator tenants can be rapidly instantiated in the cloud to administer new SD-WAN fabrics. Once the new tenant is provisioned, it will automatically become part of the centrally administered multi-tenant pool of the Aruba Orchestrator Global Enterprise. The automated scalability involved in this process accelerates new deployments and reduces manual intervention, allowing enterprises to scale with greater ease, efficiency and effectiveness.

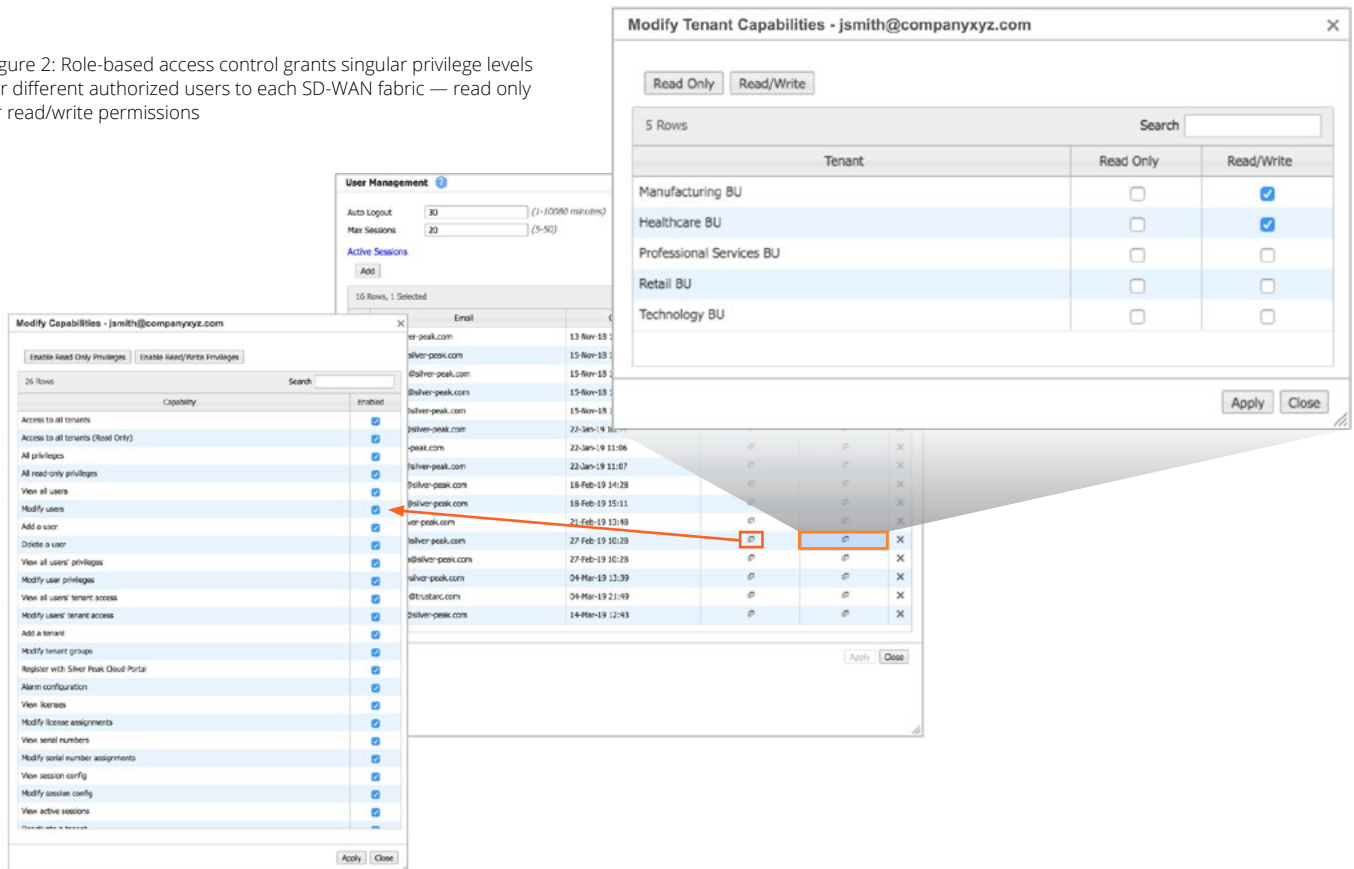
The cloud-hosted Aruba Orchestrator Global Enterprise is a software-as-a-service (SaaS) application that provides enterprises and service providers with a highly reliable,

zero-CAPEX deployment model that eliminates the complexity of managing an on-premise virtual compute and storage infrastructure. Aruba Orchestrator Global Enterprise offers the following advanced capabilities:

- **Rapid deployments** with controlled instantiation of new Aruba Orchestrator instances associated with unique SD-WAN fabrics
- **Full lifecycle management** of individual tenant SD-WAN fabrics including creation, start/stop, upgrade and deactivation
- **Aruba Orchestrator tenant isolation** enabling tenants to run independently from one another with secure, fully isolated databases and unique software releases per fabric which may be upgraded on any schedule, any time
- **Global scalability** utilizing the latest cloud scale-out technologies, providing virtually unlimited scalability as the number of tenants expands; enables customers to easily scale from 1000s of nodes to 10s of 1000s of nodes seamlessly
- **Secure, single sign-on and role-based access control** per Aruba Orchestrator instance, providing secure access per tenant SD-WAN fabric (Figure 2)



Figure 2: Role-based access control grants singular privilege levels for different authorized users to each SD-WAN fabric — read only or read/write permissions



CENTRALIZED REAL-TIME MONITORING OF SD-WAN FABRICS

Aruba Orchestrator Global Enterprise provides specific granular visibility into each SD-WAN fabric (Figure 3), including:

- **Tenant Summary Dashboard:** Displays the name of each tenant SD-WAN fabric (with click-through access to each tenant Aruba Orchestrator), license types, total number of appliances, appliance versions, software version, status and action to stop/activate as well as alarms and alerts
- **License Reports:** Include the number of license types, licenses used/available and license expiration dates for each tenant SD-WAN fabric

Each Aruba Orchestrator tenant provides specific detail into application and WAN performance for each tenant SD-WAN fabric (Figure 4), including:

- **Appliance Dashboard:** Displays a centralized summary of Aruba EdgeConnect appliances connected to the network, top talkers, applications, topology map, etc.
- **Live View:** Monitors real-time throughput, loss, latency and jitter across business intent overlays and the

underlying WAN transport services to proactively identify potential performance impacts

- **Health Map:** Provides a high-level view of Aruba EdgeConnect appliance status and network health based on configured thresholds for packet loss, latency and jitter
- **Granular Real-time Monitoring and Historical Reporting:** Provides specific details into application, location, and network statistics, including continuous performance monitoring of loss, latency, and packet ordering for all network paths; identifies all web and native application traffic by name and location, and alarms and alerts allow for faster resolution of network issues
- **Cloud Control:** Provides an accurate picture of how SaaS and infrastructure-as-a-service (IaaS) are being used within the organization with identification and reporting of cloud and data center hosted apps, tracking of SaaS provider network traffic, etc.

Each Aruba Orchestrator tenant can be accessed using a direct URL or from the Aruba Orchestrator Global Enterprise console, but only by authorized users within the RBAC framework.

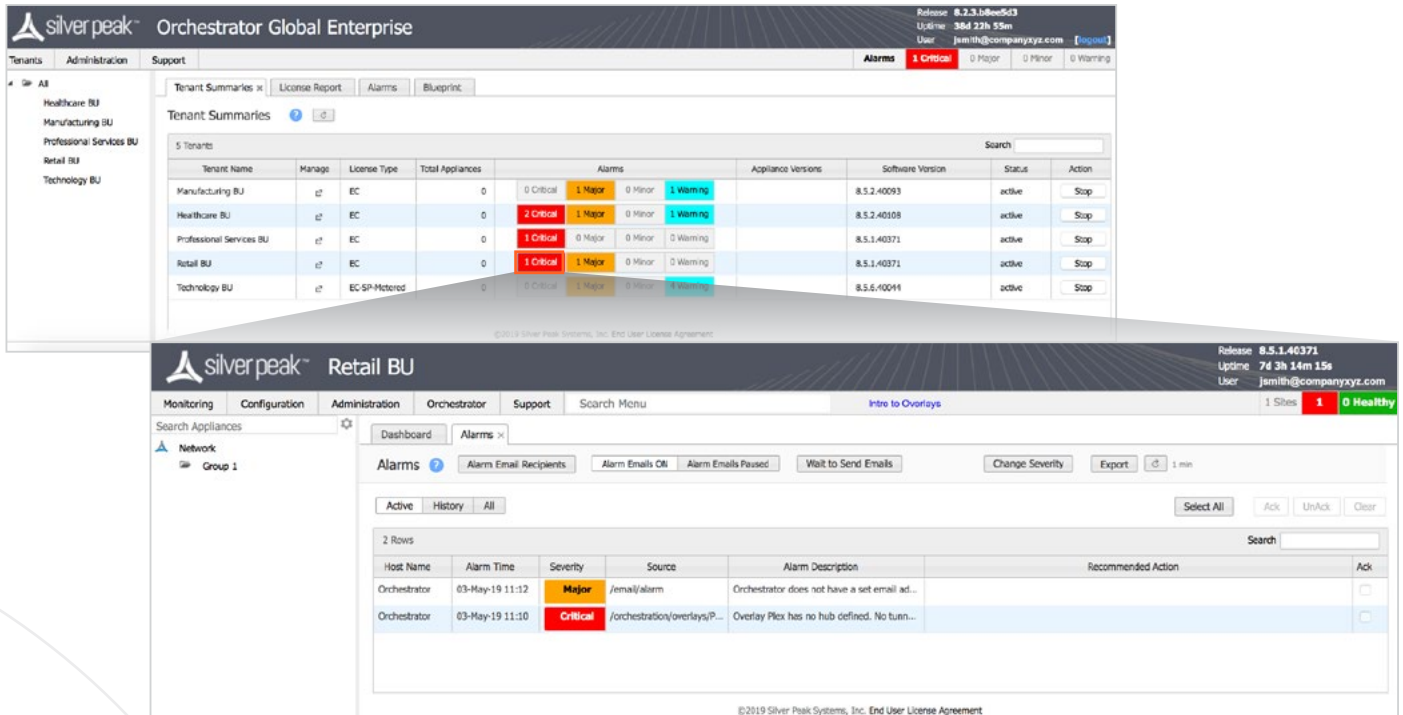


Figure 3: Aruba Orchestrator Global Enterprise with click-through access to each individual Orchestrator tenant provides further insights onto each SD-WAN

ORCHESTRATION OF 1000S OF SD-WAN APPLIANCES PER SD-WAN FABRIC

Each Aruba Orchestrator tenant supports centralized orchestration of all functions from a single pane-of-glass for its — and only its — associated SD-WAN fabric. The Aruba business-first networking model is powered by centralized SD-WAN orchestration that:

- Delivers sophisticated management and reporting, enabling rapid and consistent implementation of network-wide business intent policies
- Makes changes easier, minimizes human errors and enables faster troubleshooting so that IT is more responsive to the business
- Enables self-learning and continuous control to ensure ongoing alignment with business intent
- Provides complete observability of the entire wide-area network from a single pane of glass

For further information on the Aruba Orchestrator features and real-time health monitoring and historical reporting, refer to the [Aruba Orchestrator data sheet](#).

DELIVERING BUSINESS VALUE AND SERVICE DIFFERENTIATION

Aruba Orchestrator Global Enterprise enables large enterprises to centrally configure and manage SD-WAN fabrics in alignment to the business requirements. Similarly, it helps MSPs manage multiple global enterprise-owned SD-WAN deployments from a single management console.

Aruba Orchestrator Global Enterprise provides unprecedented levels of operational efficiency by minimizing order-to-deployment touch points with an intuitive GUI and centralized SD-WAN configuration. It provides granular visibility into all SD-WAN fabrics (click through access with the right access control), enabling rapid response for troubleshooting and support issue resolution.



With Aruba Orchestrator Global Enterprise, large enterprises are able to quickly realize the following benefits:

- **Accelerate business agility** with isolated, individually managed SD-WAN fabrics to support new BUs or subsidiaries with administrative separation, without re-architecting the network or incurring additional CAPEX
- **Reduce CAPEX, OPEX and lifecycle costs** of self-hosting new deployments with Orchestration-as-a-service with the Aruba cloud-hosted managed service offering
- **Reduce ongoing IT administration cost and overhead** with a global orchestration of SD-WAN fabrics across the entire network
- **Accelerate secure SD-WAN infrastructure growth with a cloud-scale architecture** that supports any number of additional Aruba Orchestrator tenants to drive instant expansion of new SD-WAN fabrics and network end-points
- **Ease troubleshooting, reduce human errors and simplify operations** with the centralized visibility and management of the entire network, delivering the highest quality of experience to users and IT

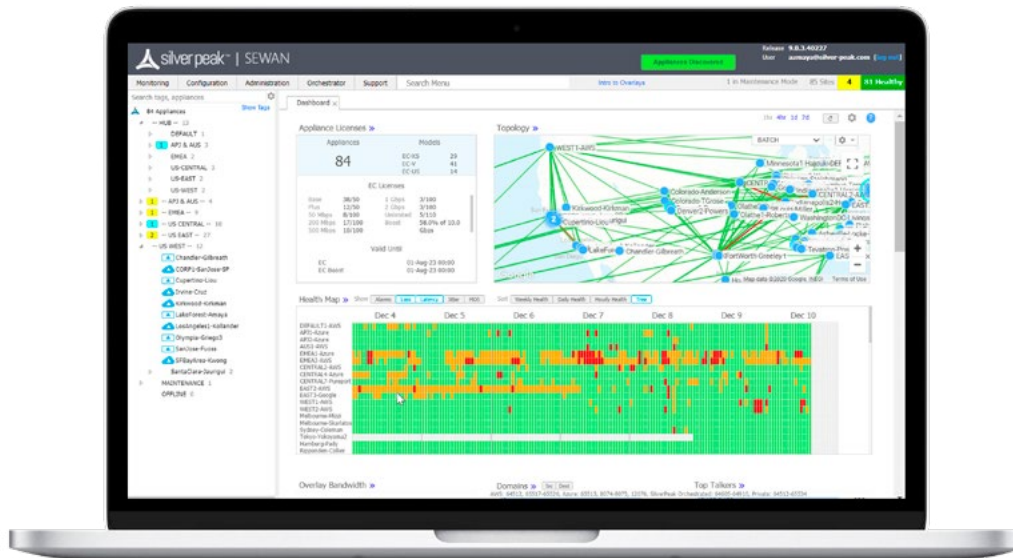


Figure 4: Aruba Orchestrator tenant dashboard provides status and details for each individual SD-WAN fabric