

AT A GLANCE

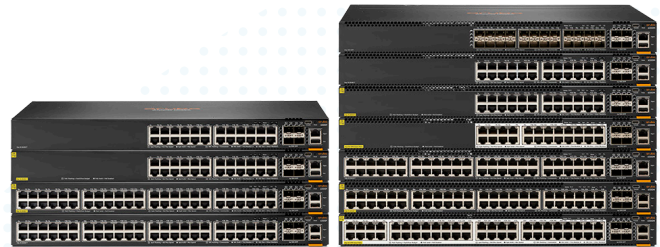
WHY UPGRADE TO THE ARUBA CX 6300 SWITCH SERIES?

Is your enterprise network ready to quickly and safely connect new IoT devices, powerful enough to handle new traffic loads and smart enough to help IT more efficiently operate, manage, and secure the network?

Prepare your network with a switch that is ready to handle it all - the Aruba CX 6300 Switch Series is a modern, flexible, and intelligent family of stackable switches ideal for enterprise network access, aggregation, core, and data center top of rack (ToR) deployments.

A powerful architecture supports scalable, non-blocking performance for future-proofing your network for tomorrow's unpredictable demands. This series has built-in high speed uplinks and includes models with 24 SFP+ ports and full density 60W PoE with multi-gigabit Ethernet for a high performance, IoT and Wi-Fi 6 ready network.

The CX 6300 switches are built using a cloud-native design and a modern operating system built on a microservices architecture to automate and simplify IT operations. AOS-CX delivers network-wide analytics and full programmability to enable complete network assurance. Easy-to-use configuration tools enable error-free installs while monitoring and analytics capabilities across the network provide operators with immediate troubleshooting and insights. And the CX 6300 provides lasting value and simplifies ownership with no switch software licensing and a Limited Lifetime Warranty.



Aruba CX 6300 Switch Series

WHY CHOOSE THE ARUBA CX 6300?

- **Future ready:** Seamlessly supports Wi-Fi 6 and IoT with Smart Rate multi-gigabit and 60W PoE ports.
- **Flexible:** Mix modular and fixed models in single stack that spans across campuses and sites.
- **Superior performance:** Built-in wirespeed 10GbE/25GbE/50GbE uplinks for demanding environments.
- **Real-time insights:** Automated analytics for rapid troubleshooting and resolution.
- **Resiliency:** Built-in high availability with VSF stacking and Always-On PoE.
- **Simple, secure, and scalable segmentation:** Automated, unified role-based policies for users, IoT and devices with Aruba Dynamic Segmentation.
- **Fully manageable:** Flexibility to manage and simplify configurations with Aruba Central, Aruba NetEdit, easy to use Web GUI or industry standard CLI
- **Simplified IT operations:** Common AOS-CX operating system used across the Aruba CX portfolio provides a more consistent, more efficient operator experience



ARUBA SWITCH COMPARISON					
Category	Feature	Aruba 2930M	Aruba 3810M	Aruba CX 6300	Upgrade Benefit
Platform	Deployment Model	Access	Access Aggregation	Access Aggregation	Simplicity of a single operating system, from edge access to data center
	Operating System	AOS-Switch	AOS-Switch	Cloud-native AOS-CX	
	Microservices-based Architecture	-	-	Yes	
	ASIC	Aruba Gen6	Aruba Gen6	Aruba Gen7 with Virtual Output Queuing (VOQ)	
	Network State & Time Series Database	-	-	Yes	
Scale, Performance, Flexibility	Switching Capacity	320 Gbps	480 Gbps	880 Gbps	Future-proof networking with on-demand growth
	Smart Rate (1/2.5/5GbE)	Up to 28 ports	Up to 12 ports	Up to 48 ports	
	10G	Up to 4 ports	Up to 24 ports	Up to 28 ports	
	25G	-	-	4 built-in 1/10/25/50G ¹ combo ports	
	40G	Up to 1 port	Up to 2 ports	-	
	50G	-	-	4 built-in 1/10/25/50G ¹ combo ports	
	PoE Power	30W per port Up to 1440W	30W per port Up to 1440W	60W per port Up to 2880W	
High Availability	Hot-swappable power supplies and fans	Yes	Yes	Yes	High availability from edge access to the core
	Stacking	Backplane (10)	Backplane (10)	VSF stacking (10)	
	Always-on PoE	-	-	Yes	
Segmentation	Aruba Dynamic Segmentation	Yes	Yes	Yes	Unified role-based security from edge access to the core
	VXLAN (with MP-BGP EVPN)	-	-	Yes	
Analytics and Automation	Programmability	Limited	Limited	Complete REST APIs	Visibility and analytics at edge access for simplified operations and troubleshooting
	Distributed analytics	-	-	Yes, NAE embedded analytics in each switch	
Management	CLI	Yes	Yes	Yes	Simplified network wide management
	Web GUI	Yes	Yes	Yes	
	Advanced Configuration	-	-	Aruba Central Multi-editor, Aruba NetEdit	
	Cloud-based Mgmt	Aruba Central	Aruba Central	Aruba Central	
Licensing and Warranty	Licensing and Subscription	No software feature licensing or subscription required			TCO value with no hidden costs
	Warranty	Limited Lifetime Warranty - warranty information			

¹ 50G capability is for use with 50G DACs for both interconnect and VSF stacking. 50G transceiver capability enabled by future software release.



WHY CHOOSE ARUBA CX SWITCHES?

The nature of business is changing --collaborative work environments, non-routine schedules, and a workforce that expects to work anytime, anywhere. As a result, organizations are adjusting their physical and technology designs to accommodate this change, and Aruba switches are optimized for this new digital workplace. Aruba switches deliver wireless integration, security, performance and value through innovative technologies that form the wired network foundation for enterprises, SMBs and branch offices.

CUSTOMER FIRST CUSTOMER LAST SUPPORT

When your network is important to your business, then your business needs the backing of Aruba **Support Services**. Partner with Aruba product experts to increase your team productivity, keep pace with technology advances and software releases and obtain break-fix support. Our Foundation Care for Aruba support services include priority access to Aruba Technical Assistance Center (TAC) engineers 24x7x365, flexible hardware and onsite support options and total coverage for Aruba products.

NETWORK MIGRATION SERVICES

Aruba offers industry-leading global high touch **Professional Network Services** for network design, installation and enablement services. Work with our team of Aruba experts and partners that have in-depth technical know-how to accelerate and simplify your migration to AOS-CX.

BECOME AN EXPERT ON CX

Aruba Education Services offers comprehensive training and certification programs from fundamental to advanced levels to give you the skills to fully utilize the power of AOS-CX.

For more information on Aruba CX access switches and the CX 6300, please visit: <https://www.arubanetworks.com/products/switches/>