

EBOOK

# AI-POWERED NETWORK INFRASTRUCTURE

THE ANSWER TO IT EFFICIENCY

**aruba**

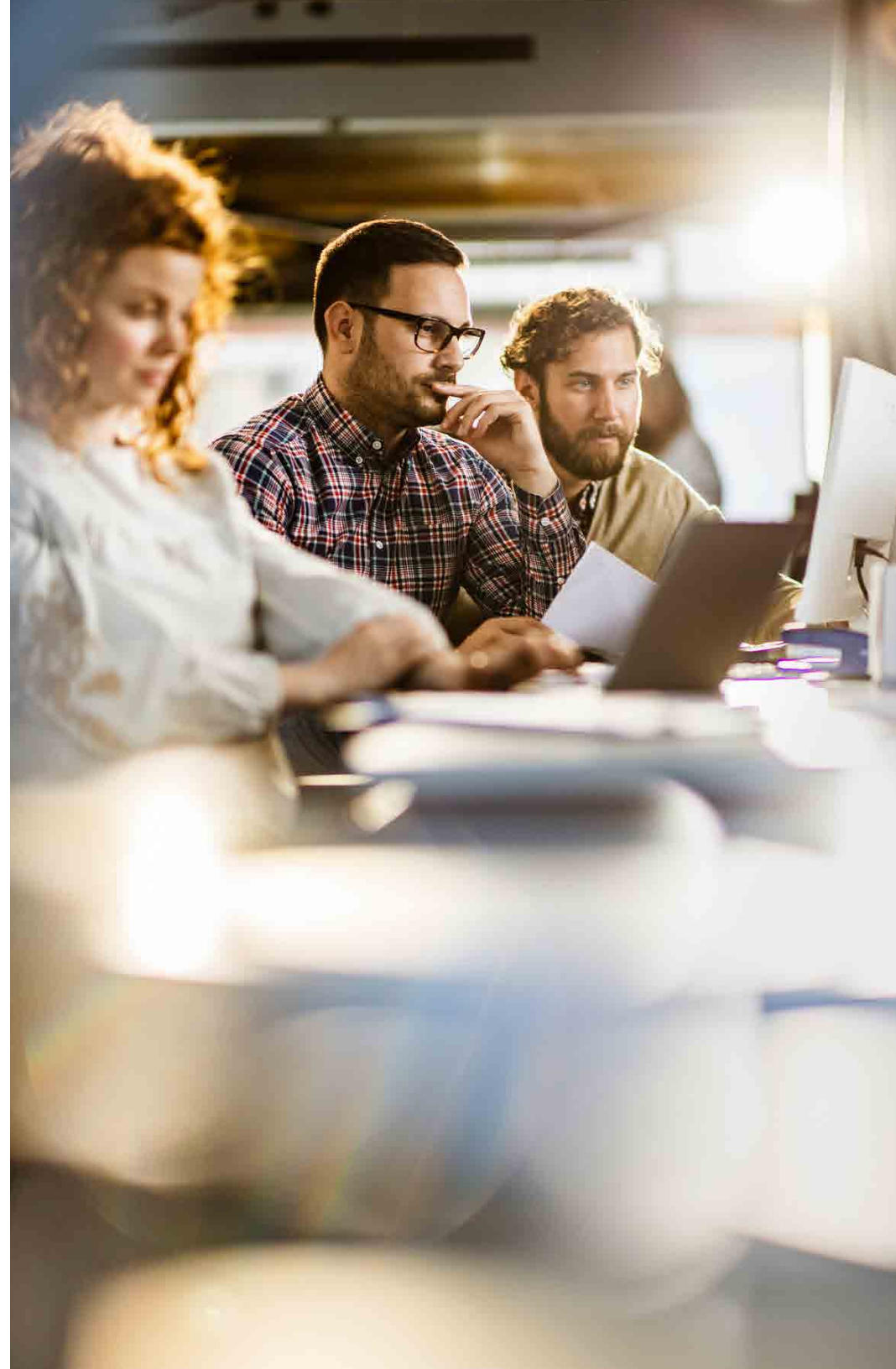
a Hewlett Packard  
Enterprise company

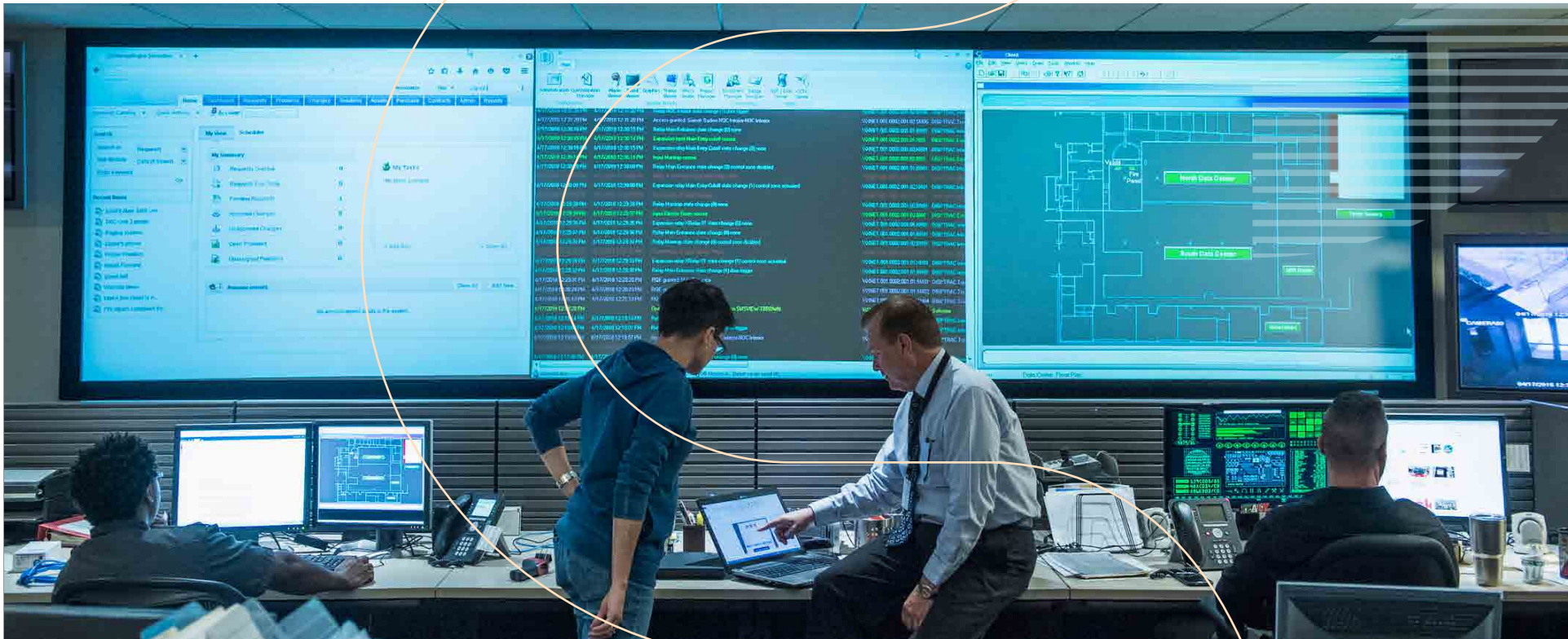


# TODAY'S IT TEAMS FACE MANY HURDLES.

During the ongoing pandemic, many people have been working from anywhere. Now that people are returning to the workplace, IT teams are rolling out new applications, upgrading infrastructure to support new services, and wrapping everything up in a tidy security blanket. Unfortunately, these teams are running into unexpected learning curves and skills gaps related to new technology as team members have changed companies or taken on different positions.

**This eBook describes today's top 4 challenges for IT as we return to the workplace and the solutions needed for improved efficiency and peace of mind.**





**CHALLENGE #1**

**IT is under pressure to get more done with tighter timelines.**

Technology is evolving so quickly that it's impossible to keep up, and IT leaders are running into issues that they can't fix by simply hiring new employees. There's a shortage of capable candidates, a steep learning curve for new hires, and existing staff that just needs a break. Many organizations are also opting to not hire new staff as it's difficult to find qualified candidates. They want infrastructure and automation that improves how and where they spend their time.

**SOLUTION**

**AI and Automation are key.**

Today's cloud-managed networking solutions offer simplicity and a variety of new AI-powered network and security services designed to improve IT efficiency. Aruba Central Cloud, a microservices based management solution, includes a complete set of AIOps tools that help IT teams of all skill levels quickly deploy infrastructure, optimize a configuration based on their needs, and streamline troubleshooting tasks.



## CHALLENGE #2

### **Older infrastructure doesn't offer the AI intelligence needed today.**

Many organizations are now dealing with lifecycle issues because they held onto Wi-Fi 4 (802.11n) wireless, older switches, and dated WAN infrastructure during the COVID work-from-home era. Now they are prime for upgrades as people are returning to the workplace. However, as budgets are tight, organizations must now ensure that new infrastructure being rolled out, outperforms the experience their users have while working from home.

## SOLUTION

### **Newer infrastructure can help boost visibility and insights.**

While data from older infrastructure is useful, newer access points, switches, and WAN gateways offer more and very detailed telemetry. Enhanced AIOps metrics and techniques, made available via advanced hardware, allow for greater monitoring and analysis than was previously possible. The result is that IT can quickly see and correct PoE issues, Wi-Fi coverage holes, and additional issues that affect the user experience. In fact, Aruba customers experience 50% to 95% fewer issues after completing upgrades and moving to AI-powered Aruba Central.



### CHALLENGE #3

## Security is a big concern. Network insights are not enough.

As organizations allow for a more distributed workforce, network admins find themselves increasingly involved in securing the network. Unfortunately, very restrictive rules that keep IoT devices off the network lead to help desk calls. IT must then spend time onboarding cameras, sensors, medical equipment, and other necessary devices. Enforcement rules, based on inaccurate client profiles, lead to segmentation and security gaps that also take up valuable IT time.

### SOLUTION

## Security insights bridge the gap.

Aruba Central contains a built-in AIOps security feature called Client Insights that profiles each endpoint connecting to Wi-Fi, wired, and WAN infrastructure so that IT truly understands what's on their networks with up to 99% accuracy. IT also gains the ability to minimize "unknown" client types to under 5%, which is game changing. Monitoring the traffic of each endpoint and leveraging network insights also lets IT automate access privileges and policy enforcement for added security benefits. It's a win-win.



**CHALLENGE #4**

**Legacy management does not meet modern requirements.**

When it comes to managing a network, breaking the mold may be the biggest challenge yet. On-premises solutions have been the status quo for decades, but they require appliances, manually upgrading software, and tons of memory to support new features like AIOps. This is expensive and time consuming. There is also the security stigma that suggests having appliances under your control is the best choice, but then security is breached when the IT team is given outside access for convenience.

**SOLUTION**

**Cloud management adds agility and scale.**

Today's cloud-managed networking offers the scale, security, and modern features that enhance digital acceleration. Aruba Central Cloud is a microservices, AI-powered platform used by 120,000+ customers who switched from on-premises to the secure, reliable cloud management. They've gained live upgrades, new AI and automation features, and a unified way to manage Wi-Fi, switching, and SD-WAN infrastructure from anywhere. There's also an on-premises Central version for those who need a hybrid option or are cloud averse.

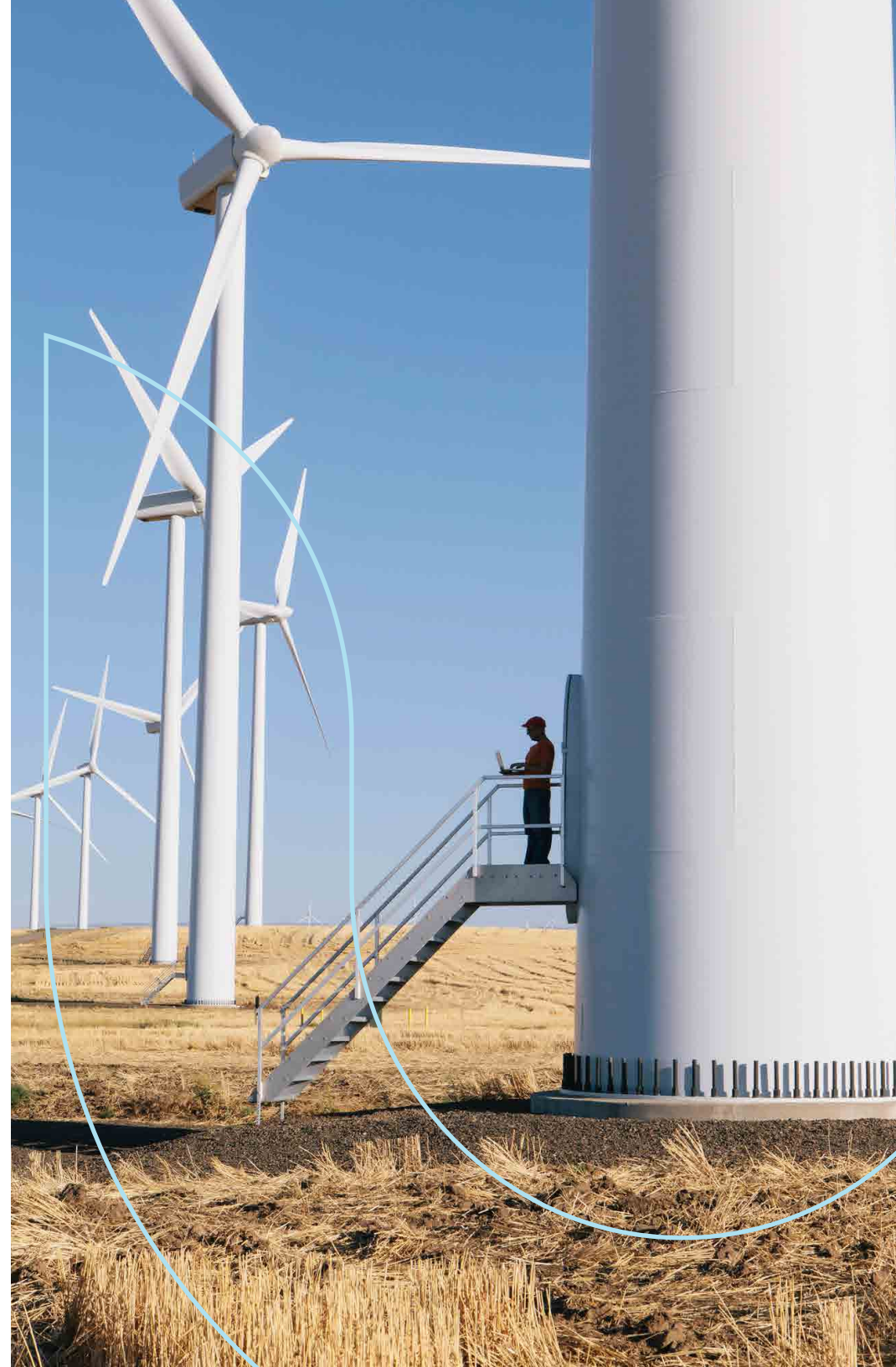
## A customer's perspective

We recognize that testimonials are a powerful way to help those 'on the fence' gain the confidence to explore new technology. The team at the CIC Group made the leap and wanted to share how new infrastructure and AIOps from Aruba have helped deliver newfound IT and user experience benefits.

"We came to Aruba from another vendor and now with AIOps we quickly see that our users are experiencing issues. The really nice thing is that in the sites where Aruba is now deployed, we're saving hours when it comes to proactively resolving things like DNS issues, before they impact our staff and users. The addition of AI security visibility built into Aruba Central is a game changer."



**Justin Kuzura, Network Engineer**  
CIC's Nooter/Eriksen



## Things to consider

### **AI is the future.**

To ensure accurate troubleshooting and optimization insights and recommendations, you need unified infrastructure and a lot of data. With over 120K customers from 30+ verticals, we're collecting useful telemetry from 2M+ wireless, wired, and SD-WAN devices and 200M+ endpoints. All of this data makes a difference.

### **Infrastructure isn't all the same.**

Consider the true impact of an infrastructure upgrade. While the goal may have been performance gains, you'll see enhanced analytics, greater network and security insights, and new time-saving orchestration features that deliver improved IT efficiency. While others may not notice the difference, you will.

### **Security is more important than ever.**

Look for infrastructure and a management solution with built-in security at every step, from the telemetry collected to the insights provided. Aruba Central includes AI-powered Client Insights and Network Insights to help you improve the user experience no matter what gets connected, from anywhere.

### **It doesn't hurt to try something new.**

AI is here to help, not minimize, the role of IT. Cloud-managed networking has come a long way in scale, security, and time savings. There's an opportunity to learn something new, push IT forward in the organization, and find time to tackle newer projects that align to long-term plans.



### **Contact Us**

© Copyright 2022 Hewlett Packard Enterprise Development LP. The information contained herein is subject to change without notice. The only warranties for Hewlett Packard Enterprise products and services are set forth in the express warranty statements accompanying such products and services. Nothing herein should be construed as constituting an additional warranty. Hewlett Packard Enterprise shall not be liable for technical or editorial errors or omissions contained herein.

EBK\_AI-powered-Network-Infrastructure\_CA\_071922 a00125627enw

