



Monitor, Manage and Reduce Energy Consumption with your Aruba Wi-Fi Network

Our energy management clients with Aruba Wi-Fi enables you to:



Measure the Source of Energy Usage



Remotely **monitor**, **control** and **set policy** for energy consumption



Analyze energy management practices to realize energy savings

Aruba & EnergyLynk



EnergyLynk light/load controllers and EnergyLynk Management Suite are compatible with Aruba OS 6.5



EnergyLynk Management Suite allows for visualization, reporting and management of the EnergyLynk light/load controllers



EnergyLynk light/load controller policy and commands are transmitted through your Aruba Wi-Fi network and controlled with the EnergyLynk Management Suite



How EnergyLynk Works

The AccelTex Solutions EnergyLynk Light/Load Controller installs into commercial building loads, including lights, plugs and other energy consuming devices. It's connected through Wi-Fi to your Aruba enterprise network and allows instantaneous measurement of the energy consumption by device.

Through EnergyLynk Management Suite, your IT and Facilities staff can review consumption and set policy to realize your energy management goals.

The Complete EnergyLynk Solution



EnergyLynk Client

802.11 b/g/n clients installed in your building



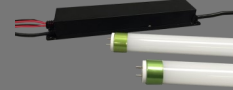
Sensors

Fully integrates into EnergyLynk client for motion activation



Wi-Fi Network

Clients and Energy Management Platform
Communicate via your Aruba Wi-Fi Network



LED Retrofit Kits

Upgrade existing bulbs and ballasts to energy efficient LED bulbs and dimmable ballasts



Management Platform

Set policy, control clients and view energy usage

Network Topology

