

PARTNER SOLUTION OVERVIEW

ARUBA AND JUNIPER

Policy Management and Firewall Perimeter Defense for the Mobile, IoT-Centric Enterprise

Perimeter firewalls and deep packet inspection sufficiently secured enterprise networks consisting of IT controlled, and issued computers. As smartphones and tablets entered the enterprise, IT could no longer rely on perimeter defenses. Users freely download apps and connect from anywhere, which has provided hackers with new ways to capitalize on threats.

Disparate security solutions must now work hand-in-hand to ensure that user and device context is used for accurate traffic inspection enforcement. And when needed, network access policy management must be able to ingest actions derived from the firewall to protect the network from new threats, even outside of the network perimeter. Integration between solutions in today's growing mobility and IoT environment is a must.

JUNIPER SRX SERVICES GATEWAYS WITHIN AN ADAPTIVE TRUST DEFENSE

The Ingress Event Engine in ClearPass allows Juniper SRX Services Gateways to alert ClearPass about devices exhibiting malicious behavior or activity. In turn, ClearPass then utilizes

this information to invoke policies or enforceable actions such as blocking, quarantining, or sending a message to a specified device. For example, if a user connects with a device corrupted by malware, Juniper SRX Series Gateways can immediately detect the threat and query ClearPass to quarantine the device from the network.

Attributes Collected from ClearPass and Shared with Juniper Firewalls:

- Source IP
- Username
- User Role
- Domain
- Device type
- Machine OS
- Machine Name
- Health/Posture

DATA EXCHANGED WITH OTHER NETWORK TOOLS

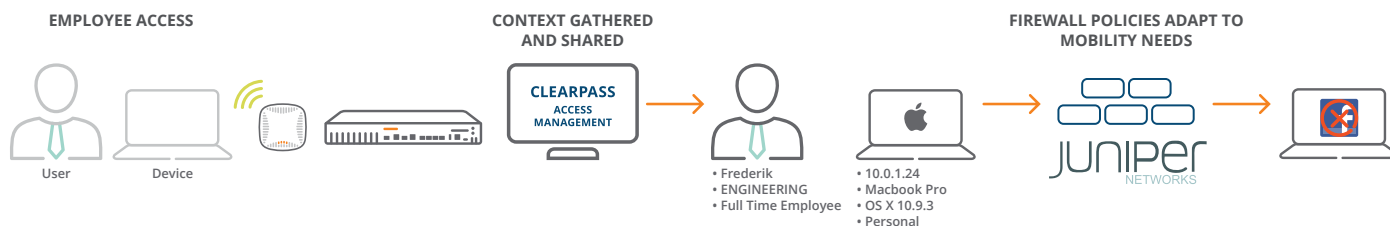


Figure 1. ClearPass Exchange Integration Workflow

GRANULAR ENFORCEMENT OF EMPLOYEE AND GUEST POLICIES

Aruba ClearPass Policy Manager is a policy management platform that provides role-based and device-based network access control (NAC) for any user, employee or guest, across any wired, wireless, and VPN infrastructure. Enterprises with Aruba wireless infrastructure typically deploy Aruba ClearPass to provide AAA, BYOD and guest services for their infrastructure. Enterprises that also deploy Juniper's EX Series switches in these environments can leverage the extensive RADIUS capabilities on EX Series switches to integrate with Aruba ClearPass.

This integration enables enterprises to deploy consistent security policies across their wired and wireless networks. As enterprises typically see a variety of user groups and endpoints, this results in multiple use cases that need to be addressed for secure access. Depending on the type of endpoint and how it is being used, an endpoint might be authenticated by 802.1X authentication, MAC authentication, or captive portal authentication. The policy infrastructure should allow for any device to connect and to authenticated based on the type of the device, the authorization level of the user, or both.

In figure 2, an end-to-end deployment is presented where Juniper SRX Services Gateway and EX switch integrates with Aruba ClearPass. The user's endpoint attempts to connect to the corporate network, via Juniper's EX4300 LAN switch, which is then re-directed to ClearPass for authentication using 802.1X. Only users and devices providing valid credentials, are permitted to access the network. ClearPass provides Juniper's SRX firewall with transparent unified and normalized access to multi user identity stores.

When the user is authenticated, this user's identity and device information is sent to the Juniper SRX. Advanced security policies will then be enforced based on real-time context to allow or deny the user's access to the protected servers behind it.

Juniper SRX Services Gateways protect against additional cybersecurity threats such as:

- Next generation firewall protection with application awareness
- Intrusion prevention
- Role based user controls
- Unified threat management

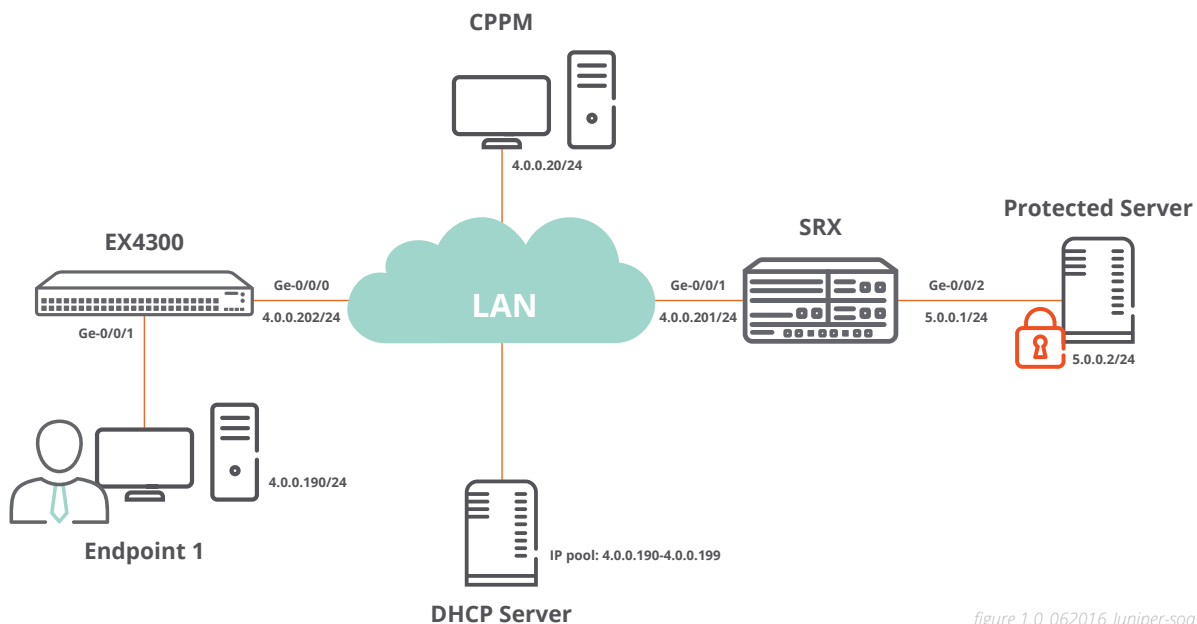


figure 1.0_062016_Juniper-soa

Figure 2. Juniper SRX, EX Switch and Aruba ClearPass

CERTIFIED INTEROPERABILITY

We've taken the guesswork out of deployments by certifying the interoperability of Juniper SRX Services Gateway with ClearPass Policy Manager. Configuration and deployment is a breeze.

SUMMARY

The combined Aruba ClearPass and Juniper SRX Services Gateway offers a best of breed integrated solution that can provide both the carrier grade scale and coverage necessary for threat protection from unknown devices both on and within your network. Contact your local sales representative to see how together Aruba and Juniper deliver the most secure solutions in the industry.

For more information on Aruba ClearPass, please visit:

<https://www.arubanetworks.com/products/security/network-access-control>

For more information on Juniper SRX, please visit:

<https://www.juniper.net/us/en/products-services/security/srx-series/>